



TIMBER LAKE (LCFPD)

FISHERIES STATUS SUMMARY

LOCATION – Located in Raven Glen Forest Preserve, west of Route 45, south of Route 173 and east of the Village of Antioch, IL., Lake County.

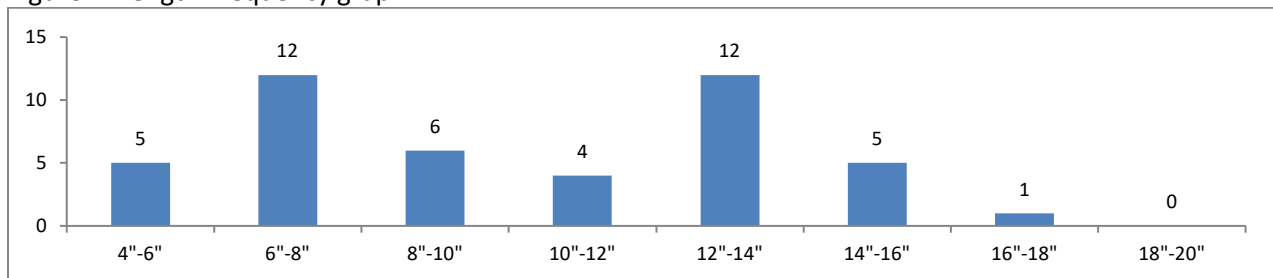
DESCRIPTION – Timber Lake (LCFPD) is a glacial origin lake. Timber Lake is 33.3 acres; shoreline length 1.0 miles; watershed 412 acres (12 to 1); maximum depth 33.3 feet; average depth 16.5 feet. A limestone trail system leads to the lake. A fishing pier is located on the north shore of the lake but no other facilities are available. No boats can be launched from Forest Preserve Property.

MANAGEMENT ACTIVITIES: The IDNR occasionally conducts fish surveys to update the Status of the Fishery. The lake is relatively remote so little management occurs on this lake. The Forest Preserves limited access to the lake makes fishing it difficult. Fishing is essentially limited to a shallow fishing pier.

STATUS OF THE SPORT FISHERY – No stocking occurs in Timber Lake but because of its bathymetry and difficult access, the lake has a nice bass fishery. Below is a brief description of catchable game species in this water body.

LARGEMOUTH BASS – In 2021, 51 bass were collected in 50 minutes of DC electrofishing. Fish measured up to 16.3”, and weighed up to 2.0 lbs. 71% were >12”, 14% were >15” (legal length) and 0% exceeded 18” long. This size structure offers reasonable “catching” but compared to past surveys our sample lacked the larger fish we usually collect.

Figure 1. Length Frequency graph



BLUEGILL – In 2021, 53 Bluegill were captured in 50 minutes DC electrofishing. The largest was 8.3” long and weighed 0.4 lbs. 12.5% of the bluegill were > 6”, and 10% exceeded 7” long. The steep sides of this lake make it difficult to collect fish in the “sweet-zone” of electrofishing.

BLACK CRAPPIE – 13 Black crappie were collected during this survey. Fish up to 10.4” long were collected, most of them were along the outside weed edge!

FISHING REGULATIONS – See current Illinois Fishing Regulation Booklet and/or <http://www.ifishillinois.org>

Additional Site Specific fishing regulations: Always check posted signs for local ordinance regulations.

All fish species - Two pole and line fishing only.

Largemouth Bass – 15” minimum length limit; 1 fish daily creel limit.

ADDITIONAL FISH SPECIES:

(50 minutes DC electrofishing)

Species	Number	Relative Abundance (%)	Minimum (inches)	Average (inches)	Maximum (inches)
BLUEGILL	53	28.6	1.2	3.9	8.3
LARGEMOUTH BASS	51	27.6	3.0	9.2	16.3
GOLDEN SHINER	25	13.5	2.4	4.8	7.9
COMMON CARP	24	13.0	20.1	22.0	23.8
BLACK CRAPPIE	13	7.0	2.8	7.3	10.4
BLUNTNOSE MINNOW	7	3.8	1.5	2.2	3.2
PUMPKINSEED SUNFISH	5	2.7	3.8	4.2	4.6
YELLOW PERCH	3	1.6	5.4	5.9	6.5
WARMOUTH	3	1.6	3.7	4.9	7.4
YELLOW BULLHEAD	1	0.5		10.9	
SPECIES = 10	TOTAL =	185	100.0		

CONTACT INFORMATION – Lake County Forest Preserve District: 847/367-6640.
IDNR District Fisheries Biologist: 815/675-2386.

Timber Lake Map

