



WOLF LAKE – WILLIAM POWERS STATE RECREATION AREA

FISHERIES STATUS SUMMARY

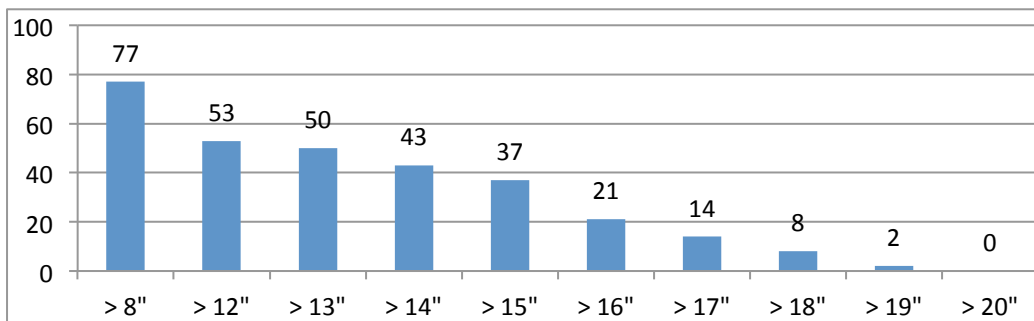
LOCATION – Southeast of Chicago, east of Avenue “O” at 130th St. in the Hegwisch neighborhood

DESCRIPTION – Prior to 1947 Wolf Lake was a small, shallow, glacial lake situated in a wetland area between the confluence of the Grand Calumet and Calumet Rivers. Since that time however, the construction of a low level dam and levees from extensive dredging operations have changed the lake’s appearance. The lake and it’s fishery have developed into a haven for fishermen enjoying some quiet time in this highly urbanized area and offers the chance to catch some quality size fish. Illinois’ portion of Wolf Lake consists of 390.0 of the acres of water and is managed by the Illinois Department of Natural Resources. Fishing ranks as one of the most popular recreational activities at William Powers. Maximum depth 15 feet; average depth 5 feet. There are 3 developed boat ramps in the Park but no concession or fish cleaning facilities available.

MANAGEMENT ACTIVITIES: Last survey was 5/2/2017 evaluating overall fishery in the three pools; no herbicides were applied in 2017 but in 2016 two gallons of Reward were applied in the Office Lagoon to manage Eurasian milfoil and lily pads and keep the area open for the trout seasons; in 2013, the IEPA requested fish flesh contaminant samples as part their Statewide monitoring program.

STATUS OF THE SPORT FISHERY – Wolf Lake has received annual stockings of predator sport fish: 12,000 8” to 160” channel catfish, 4500 2” smallmouth bass, 1200 8” northern pike, and 15,000 2” walleye for many years. Northern pike were dropped from hatchery production in 2017 so we increased largemouth bass numbers by 10,000 2” to 4” fiingerlings. Below is a brief description of catchable game species in this water body.

LARGEMOUTH BASS – In 2017, 85 bass were found in one hour of shocking. These fish measured 4” to 19”, and weighed up to 3.6 lbs.; 69% were greater than 12” long (sexually mature) and 56% were over 14” (legal size), 47% greater than 15” and 26% greater than 16” so bass fishing can be very good. This size structure creates high reproductive potential and should help expand the population.



BLUEGILL – In 2017, 20% of the bluegill captured exceeded 6” long. They ranged from 2” to 7.5”, the largest weighing 0.29 lbs. Abundant aquatic vegetation provides hiding cover and reduces predator efficiency but since the lake includes some E&T pondweed species, it’s a balancing act between managing vegetation and protecting listed species. Additional largemouth bass predation should help grow larger panfish.

BLACK CRAPPIE – 7 black crappie were collected in 2017. These fish measured from 4.2” to 10.2”, and weighed up to 0.54 lbs. Fishermen report nice size fish but crappie are difficult to collect with electrofishing gear so are poorly represented in our data.

CHANNEL CATFISH – This species is stocked every year at 8” to 10” to enhance shore fishing opportunities. Fishermen report catches up to 5.0 lbs., our catch data is too sparse to comment.

NORTHERN PIKE – Wolf Lake a good match for northern pike, the lake is shallow, well vegetated and has clear water. Fishermen report fish up to 20 lbs., we typically collect fish from 22” to 28” long. If hybrid muskie are caught they are from downstream migrants from Indiana’s portion of Wolf Lake. Illinois has not stocked tiger muskie (hybrids) in Wolf Lake since the low 1990’s and none of those fish exist anymore. Northern pike stockings were stopped in 2017 but fish will be present for the next 5 or 6 years so – enjoy!

Species	Number	Relative Abundance (%)	Minimum (inches)	Average (inches)	Maximum (inches)
LARGEMOUTH BASS	85	25.8	4.2	13.2	19.2
BLUEGILL	88	26.7	2.1	5.0	7.4
YELLOW PERCH	28	8.5	2.5	5.4	8.7
BLUNTNOSE MINNOW	17	5.2	2.6	2.8	3.1
GRASS PICKEREL	15	4.6	7.4	9.1	12.4
ROCK BASS	15	4.6	4.3	6.2	9.1
REDEAR SUNFISH	15	4.6	2.8	6.8	9.6
NORTHERN PIKE	9	2.7	12.6	21.1	24.4
WARMOUTH	8	2.4	1.9	5.0	8.3
LAKE CHUBSUCKER	8	2.4	6.4	7.4	10.0
BLACK CRAPPIE	7	2.1	4.2	7.2	10.3
GOLDEN SHINER	7	2.1	3.4	5.9	10.4
COMMON CARP*	6	1.8	19.9	22.0	25.0
SMALLMOUTH BASS	5	1.5	7.3	14.7	19.2
BANDED KILLIFISH	3	0.9	3.1	3.6	4.3
BROWN BULLHEAD	2	0.6	9.4	13.0	16.5
GREEN SUNFISH	2	0.6	2.4	3.1	4.0
CHANNEL CATFISH	2	0.6	8.9	13.7	18.4
BLUEGILL HYBRID	3	0.9	3.0	3.1	3.3
ROUND GOBY	1	0.3		2.8	
WALLEYE	1	0.3		18.9	
GIZZARD SHAD	1	0.3		17.8	
PUMPKINSEED SUNFISH	1	0.3		5.1	
SPECIES = 23	TOTAL =	329	100.0		

FISHING REGULATIONS –

SPECIES	DAILY LIMIT	LENGTH LIMIT
LARGEMOUTH/ SMALLMOUTH BASS	6	14”
WALLEYE	6	14”
TIGER MUSKIE	1	36”
NORTHERN PIKE	3	24”
CHANNEL CATFISH	6	NONE
RAINBOW TROUT (SEASONALLY)	5	NONE

All fish species - Two pole and line fishing only.

Fishing access reduced during Waterfowl Hunting Season

(See current Illinois Fishing Information Booklet and IFISHILLINOIS website <http://www.ifishillinois.org/> for specific details).

ADDITIONAL SITE REGULATIONS:

BOATERS – No size limit, no wake for motors larger than 10 hp

PARK OPEN SUNRISE TO SUNSET

CONTACT INFORMATION – William Powers State Conservation Area: 773/646-3270.
IDNR District Fisheries Biologist: 815/675-2319.

Wolf Lake Map

