



LAKE KAKUSHA

FISHERIES STATUS SUMMARY

LOCATION –

DESCRIPTION – Lake Kakusha is a 53-acre lake located on just off Illinois Route 251. Lake Kakusha is owned by the city of Mendota and the Fishery is managed by the Illinois Department of Natural Resources Fishery Division. Lake Kakusha has one boat ramp, but the lake has a no gas motor regulation.

MANAGEMENT ACTIVITIES - The fishery is managed by annual species-specific surveys, regulations, and stocking.

STATUS OF THE SPORT FISHERY – Lake Kakusha receives an annual stocking of Channel catfish, and Largemouth bass.

Largemouth Bass:

Lake Kakusha has a history of an up and down Largemouth bass populations. A study done by the Illinois History Survey in the 2000’s showed that Largemouth population can be dependent on stockings of Largemouth bass fingerlings. The current population is representative of a population that has issues with recruitment. Stocking of advanced fingerlings since 2020 has helped numbers of fish less than 15 inches. Aquatic Vegetation will need to return to some of this lake to help with natural reproduction and recruitment of Largemouth bass. The upside to the low population numbers is the Largemouth that have excellent growth. Numbers of fish over 20 have remained stable since 2018.

1.Management Plan Fall: Goal	2018	2021	2022	2023	2024
# Stock (200mm)>100	21	21	16	19	26
PSD (95% CI) 40-60	95	57(26)	75(37)	68(32)	81(19)
RSD 15 10-20	67	33	44	32	42
RSD 18 0-10	38	0	13	11	23

2.Fall diurnal DC electrofishing CPUE (fish/hr) of each length group of Largemouth bass collected at Lake Kakusha

Year	<8	8-12	12.1-15	15.1-20	> 20	Total
2018	6.0	2.0	12.0	20.0	8.0	48.0
2021	22.0	18.0	10.0	14.0	0.0	64.0
2022	8.0	8.0	10.0	12.0	2.0	40.0
2023	4.0	12.0	14.0	10.0	2.0	42.0
2024	16.0	10.0	20.0	18.0	4.0	68.0

Bluegill:

2024 sample showed a similar population numbers to the 2023 sample. Common Carp and Black Crappie competition will be the issues for this population going forward. Removal efforts of Common carp will continue in the future. Aquatic Vegetation will need to return to some of this lake to provide additional food resources for Bluegill. Water clarity due to the carp population is also a major hinderance to the overall productivity in Lake Kakusha.

<u>1.Management Plan:</u>	<u>Goal:</u>	<u>2018</u>	<u>2021</u>	<u>2022</u>	<u>2023</u>	<u>2024</u>
#Stock(80mm)	>100	27	125	178	134	117
PSD (95% CI)	20-60	48	5(4)	22(6)	18(6)	43(8)
RSD 7	10-15	11	0	0	0	0
RSD 8	0-10	0	0	0	0	0

2.Fall diurnal DC electrofishing CPUE (fish/hr) of each length group of Bluegill collected at Lake Kakusha

<u>Year</u>	<u><3</u>	<u>3.1-6</u>	<u>6.1-8</u>	<u>8.1-10</u>	<u>Total</u>
2018	0.0	28.0	26.0	0.0	54.0
2021	68.0	238.0	12.0	0.0	318.0
2022	12.0	278.0	78.0	0.0	368.0
2023	10.0	220.0	48.0	0.0	278.0
2024	38.0	134.0	100.0	0.0	272.0

Crappie:

Black crappie are present in Lake Kakusha. Previous years indicated a very dense slow growing population of Black Crappie.

Other Species:

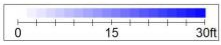
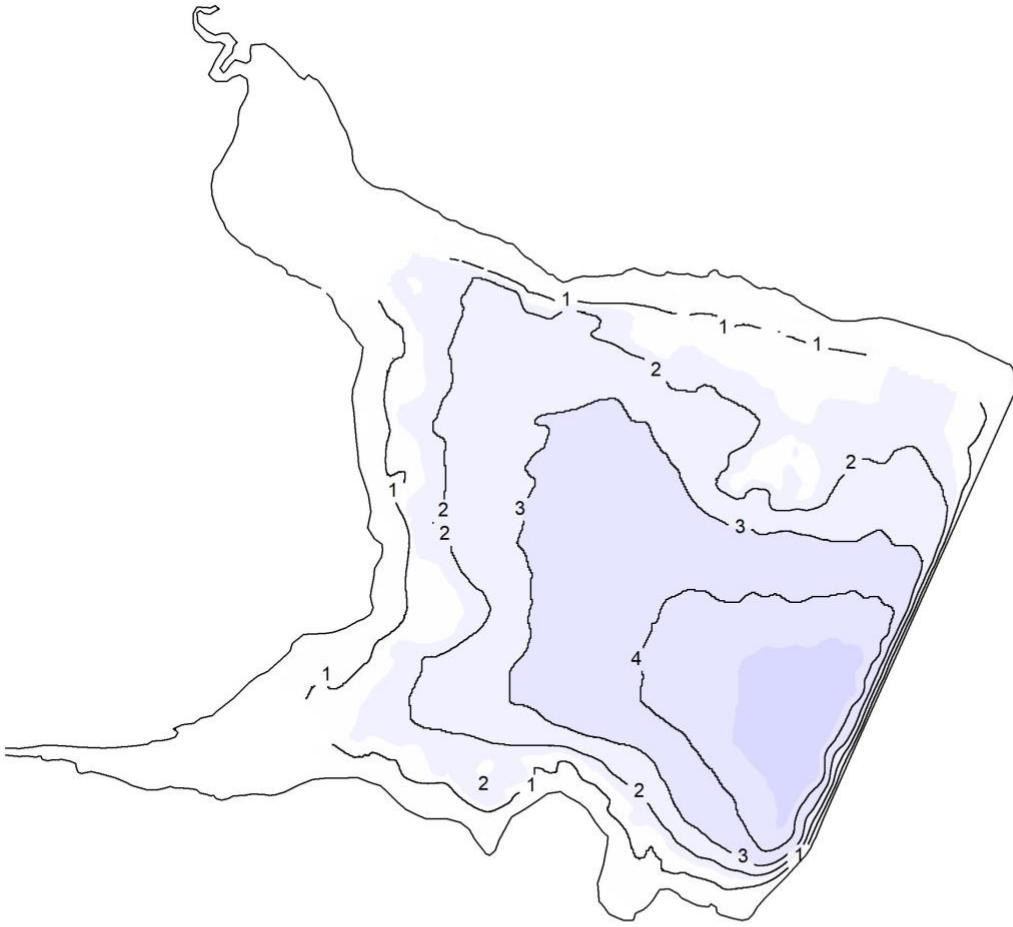
Other species present at Lake Kakusha are Channel catfish, Flathead catfish, Green sunfish and Common carp

FISHING REGULATIONS – Statewide fishing regulations apply at this lake (see current Illinois Fishing Information booklet and IFISHILLINOIS website <http://www.ifishillinois.org/> for specific details).

Additional Site Specific fishing regulations:

- All Fish 2 Pole and Line Fishing Only
- Large or Smallmouth Bass 3 Fish Daily Creel Limit over 14 inches
- Bluegill or Redear Sunfish Statewide Regulations
- Channel Catfish 6 Fish Daily Creel Limit
- White, Black, or Hybrid Crappie 25 Fish Daily Creel Limit (No Minimum length limit)

CONTACT INFORMATION – Mendota Park District: 815-539-7287
IDNR Fisheries County Biologist: 630-360-4185



KaKusha 2022
Mapping by AutoChart