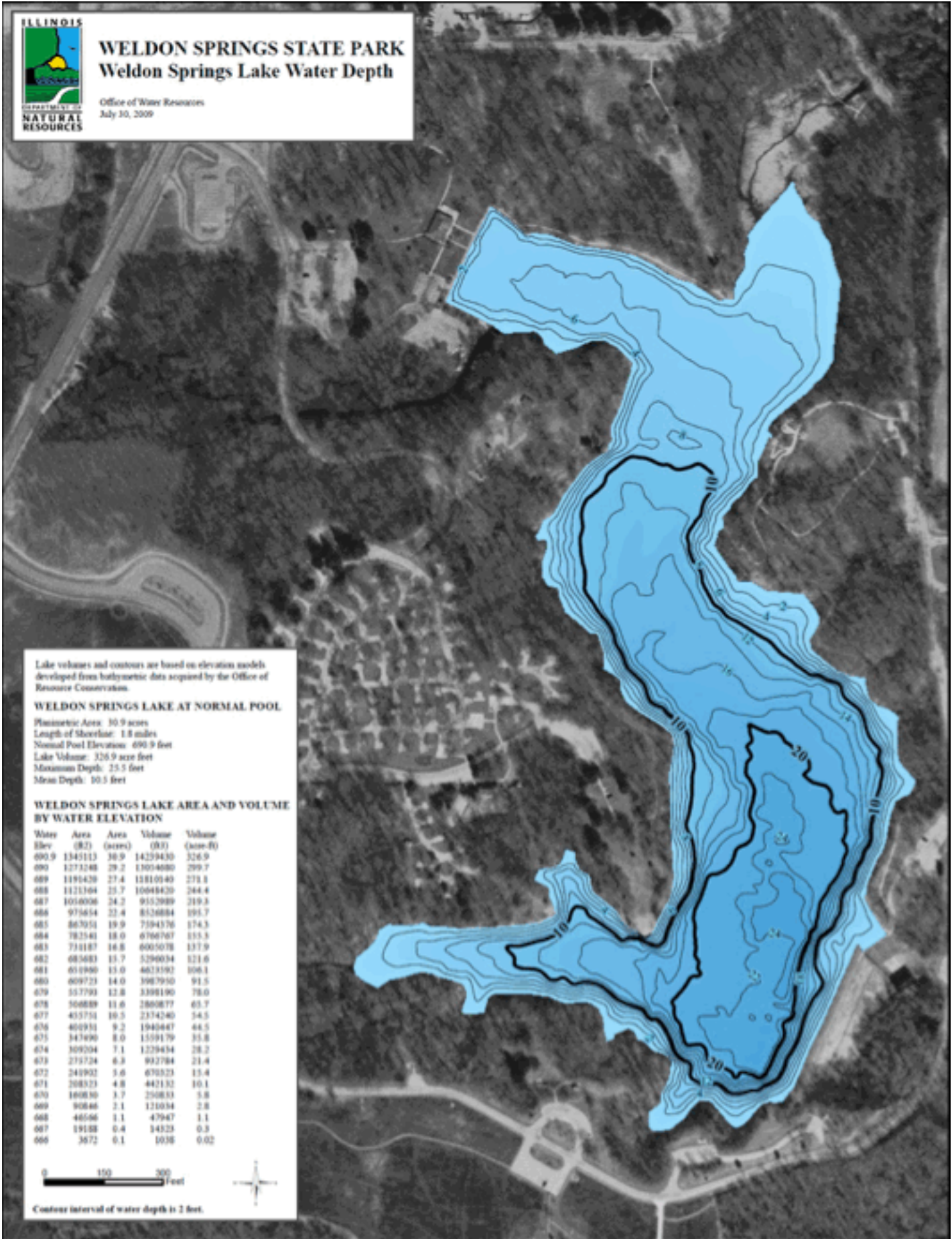




# WELDON SPRINGS STATE PARK Weldon Springs Lake Water Depth

Office of Water Resources  
July 30, 2009



Lake volumes and contours are based on elevation models developed from bathymetric data acquired by the Office of Resource Conservation.

### WELDON SPRINGS LAKE AT NORMAL POOL

Planimetric Area: 30.9 acres  
Length of Shoreline: 1.8 miles  
Normal Pool Elevation: 690.9 feet  
Lake Volume: 326.9 acre-feet  
Maximum Depth: 25.5 feet  
Mean Depth: 10.5 feet

### WELDON SPRINGS LAKE AREA AND VOLUME BY WATER ELEVATION

Water Elev. (ft)	Area (acres)	Volume (acre-ft)
690.9	1345113	30.9
690	1273248	29.2
689	1191438	27.4
688	1121364	25.7
687	1056036	24.2
686	975654	22.4
685	867051	19.9
684	782541	18.0
683	711187	16.8
682	683683	15.7
681	651940	15.0
680	609723	14.0
679	557793	12.8
678	506889	11.6
677	457751	10.5
676	409391	9.2
675	347490	8.0
674	309204	7.1
673	275724	6.3
672	246932	5.6
671	208373	4.8
670	160830	3.7
669	90846	2.1
668	46546	1.1
667	19158	0.4
666	3672	0.1



Contour interval of water depth is 2 feet.