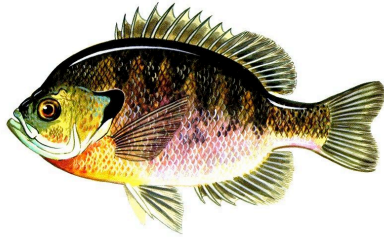


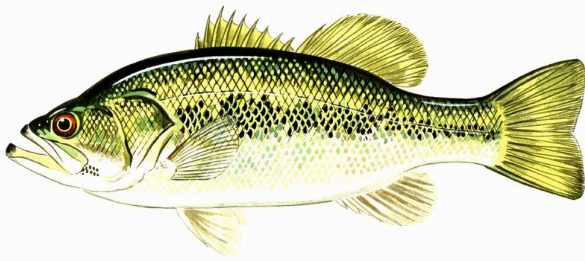
QUICK REFERENCE GUIDE

COMMON SPORT FISH IDENTIFICATION



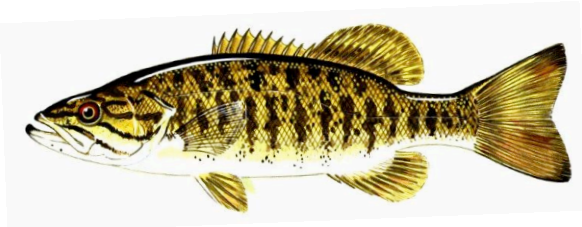
BLUEGILL SUNFISH

- 10 Sharp spines on back (dorsal) fin
- Black ear tab
- Blueish color on chin



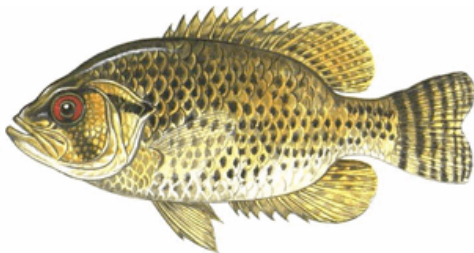
LARGEMOUTH BASS

- 10 Sharp spines on back (dorsal) fin
- Wide dark stripe extending the length of the body
- The jaw extends past the eye



SMALLMOUTH BASS

- 10 Sharp spines on back (dorsal) fin
- Vertical bars on the side of body
- The jaw does not extend past the eye



ROCK BASS

- 10 Sharp spines on back (dorsal) fin
- Red eye
- Dotted strips on body



CRAPPIE

- Thin body
- One large top (dorsal) fin
- Black and white color pattern



YELLOW PERCH

- Dark vertical stripes (usually 7) on the body
- Front lower fins (pelvic) are close together
- Front lower fins (pelvic) are usually red to orange.