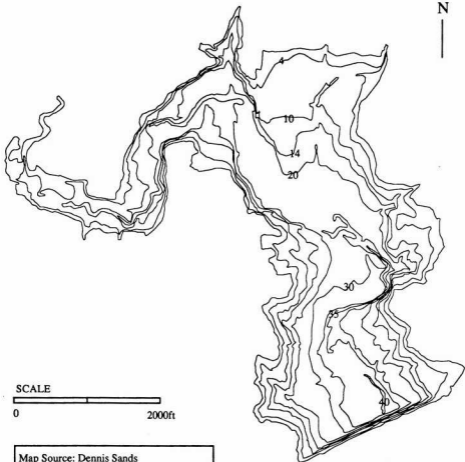


SHABBONA LAKE

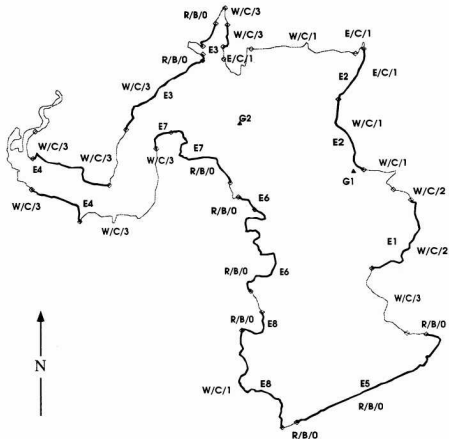


SCALE



Map Source: Dennis Sands
Mapping Method: Pre-impoundment study
Date completed: 3/8/74

SHABBONA LAKE



Habitat Codes (given as a three character code: Habitat/Substrate/Hard Cover)

Habitat:

W = Woody debris
 E = Emergent vegetation
 R = Rip rap
 O = Open area
 D = Docks
 T = Retaining wall or dam face
 U = Unknown

Substrate:

M = Mud or silt
 C = Clay
 S = Sand
 G = Gravel
 B = Rock or boulder
 U = Unknown

Hard Cover Rating:

0 = 0% woody debris and no docks.
 1 = 0% woody debris with docks or 1-33% woody debris.
 2 = 1-33% woody debris with many docks or 34-66% woody debris.
 3 = 34-66% woody debris with many docks or greater than 67% woody debris.

Information compiled by the Illinois Natural History Survey, completed 5/24/88

SHABBONA LAKE

County: DEKALB
Latitude: 414422
Longitude: 885122

IDOC Region: 1
IDOC District: 1
IDOC Lake Number: 14
Storet Code: VT-B04-U
IDOC Lake Class: ST
Lake Origin: AA
Natural Division: 4A

Surface Area (ha): 126.8
Surface Area (acres): 304.3
Mean Depth (m): 4.65
Maximum Depth (m): 12.8
Shore Length (km): 10.5
Shoreline Dev. Index: 2.63

Year Constructed: 1973

Watershed Area (ha): 5217
Storage Cap. (1000 m³): 5904.72

USGS 7.5' Quad: SHABBONA GROVE*/WATERMAN

Major River Basin: ILLINOIS
Inflowing Stream: INDIAN CR
Outflowing Stream: INDIAN CR>FOX R>IL R

Retention Time (yrs): 0.6
Volume Dev. Index: 1.09

Typical Water Chemistry:
Secchi Disk Depth (cm): 153
Conductivity (umhos): 513
Total Alkalinity (mg/l): 261
pH: 8.1

Maximum Length (km): 1.88
Maximum Width (km): 1.92
Inshore Mean Depth (m): 1.5
Pool Elevation (m msl): 249.9

Climatic Information:
Growing Season (days): 163
Growing Deg. Days (50°F base): 3038

Habitat Description as a Proportion of Total Shoreline and Shoreline Sampled by Electrofishing

<u>Habitat Type</u>	<u>Percent of Total Shoreline</u>	<u>Percent of Total Shoreline Sampled by Electrofishing</u>
E/C/1	6	3
R/B/0	30	24
W/C/2	5	5
W/C/3	42	14
W/C/1	17	10

Fish Species Present in Lake (based on IDOC sampling):

Black Bullhead	Tiger Muskellunge
Black Crappie	Walleye
Bluegill	White Crappie
Brook Silverside	White Sucker
Brown Bullhead	Yellow Bullhead
Channel Catfish	Yellow Perch
Gizzard Shad	
Golden Redhorse	
Golden Shiner	
Green Sunfish	
Largemouth Bass	
Muskellunge	