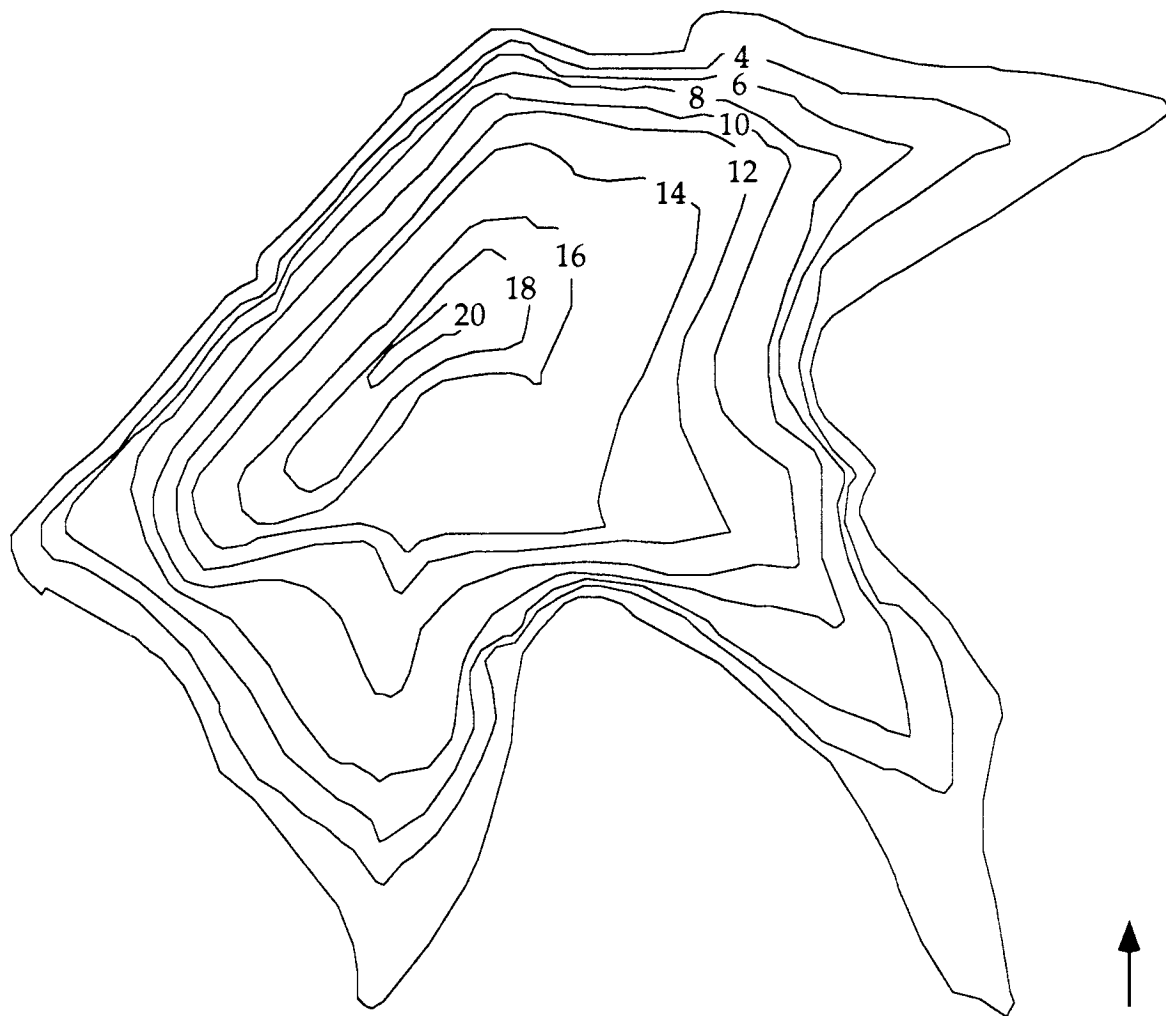


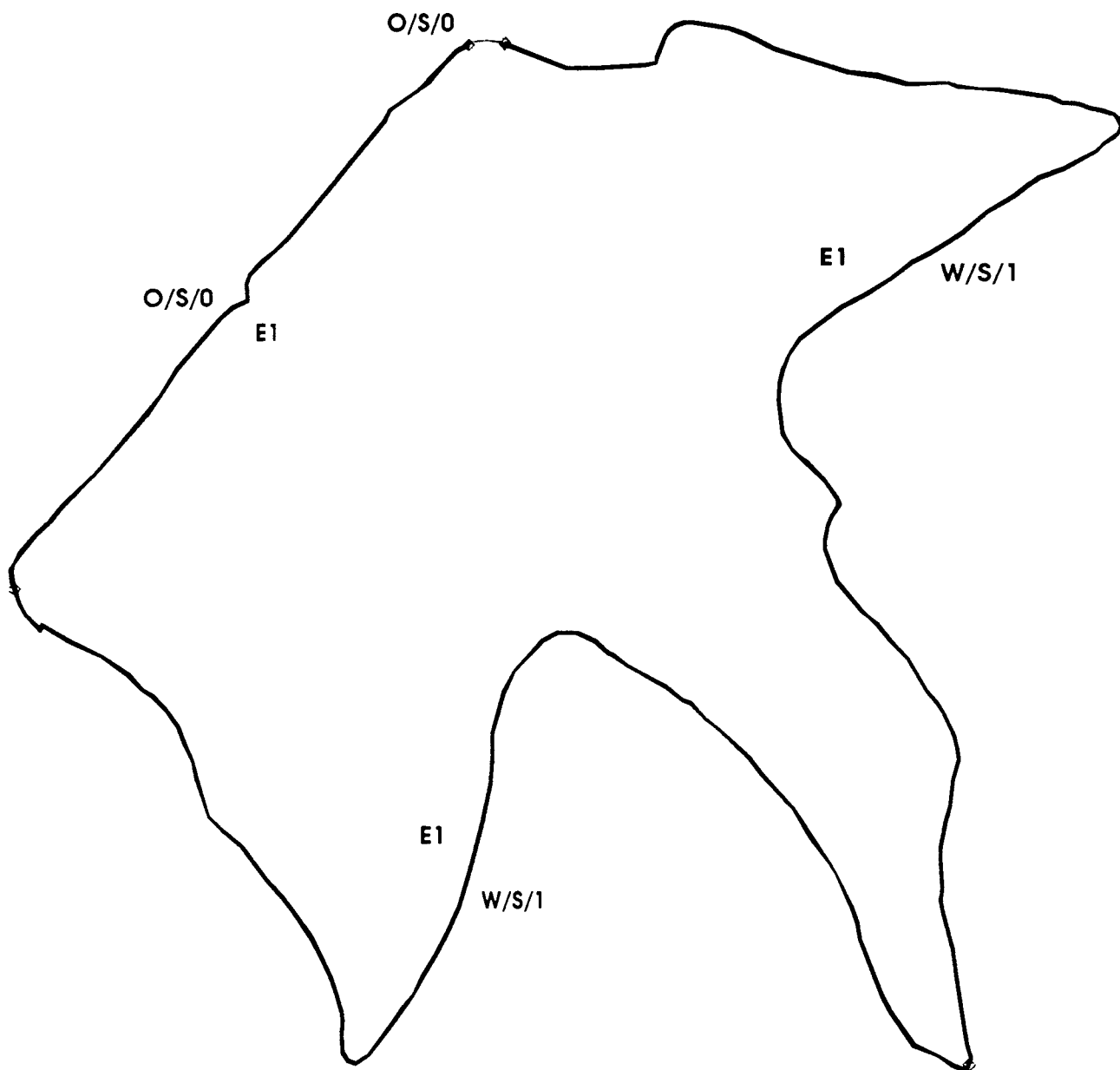
FERNE CLYFFE



SCALE
0 500ft

Map Source: Illinois Natural History Survey
Mapping Method: Transect, outline from IDOC
aerial photo
Date completed: 11/11/87

FERNE CLYFFE



Habitat Codes (given as a three character code: Habitat/Substrate/Hard Cover)

Habitat:

W = Woody debris
 E = Emergent vegetation
 R = Rip rap
 O = Open area
 D = Docks
 T = Retaining wall or dam face
 U = Unknown

Substrate:

M = Mud or silt
 C = Clay
 S = Sand
 G = Gravel
 B = Rock or boulder
 U = Unknown

Hard Cover Rating:

0 = 0% woody debris and no docks.
 1 = 0% woody debris with docks or
 1-33% woody debris.
 2 = 1-33% woody debris with many docks
 or 34-66% woody debris.
 3 = 34-66% woody debris with many docks
 or greater than 67% woody debris.

Information compiled by the Illinois Natural History Survey, completed 10/29/86



FERNE CLYFFE

County: JOHNSON
Latitude: 372800
Longitude: 885833

IDOC Region: 5
IDOC District: 18
IDOC Lake Number: 257
Storet Code:
IDOC Lake Class: ST
Lake Origin:
Natural Division: 13A

Surface Area (ha): 6.2
Surface Area (acres): 14.8
Mean Depth (m): 2.69
Maximum Depth (m): 6.4
Shore Length (km): 1.45
Shoreline Dev. Index: 1.65

Year Constructed: 1959

USGS 7.5' Quad: GOREVILLE
Major River Basin: OHIO
Inflowing Stream: INT
Outflowing Stream: INT>HAPPY HOLLOW CR>SALINE R

Watershed Area (ha): 51
Storage Cap. (1000 m³): 165.55
Retention Time (yrs): 0.9
Volume Dev. Index: 1.26

Typical Water Chemistry:

Secchi Disk Depth (cm): 37
Conductivity (umhos): 73
Total Alkalinity (mg/l): 49
pH: 7.2

Maximum Length (km): 0.35
Maximum Width (km): 0.37
Inshore Mean Depth (m): 2.2
Pool Elevation (m msl): 179.8

Climatic Information:

Growing Season (days): 194
Growing Deg. Days (50°F base): 4330

Habitat Description as a Proportion of Total Shoreline and Shoreline Sampled by Electrofishing

Habitat Type	Percent of Total Shoreline	Percent of Total Shoreline Sampled by Electrofishing
O/S/0	17	17
W/S/1	83	83

Fish Species Present in Lake (based on IDOC sampling):

Black Crappie
Bluegill
Channel Catfish
Golden Shiner
Green Sunfish
Largemouth Bass
Red Shiner
Redear Sunfish