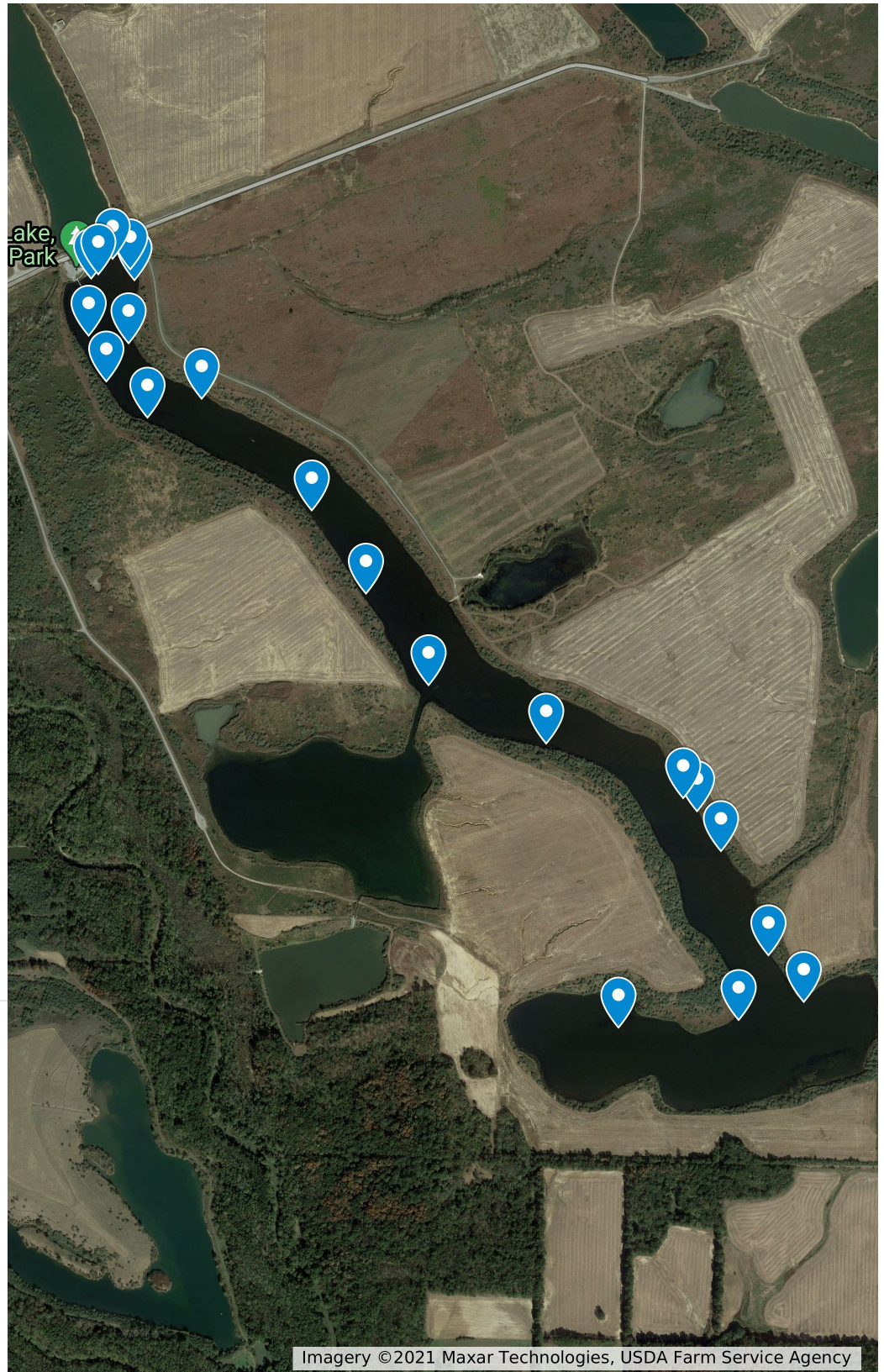


Goldeneye Lake Fish Attractors

Autumn Olive Brush Piles -
01/2021

- 38 01.306 N, 89 27.556 W
- 38 01.328 N, 89 27.456 W
- 38 01.384 N, 89 27.510 W
- 38 01.510 N, 89 27.583 W
- 38 01.558 N, 89 27.620 W
- 38 01.574 N, 89 27.641 W
- 38 01.640 N, 89 27.851 W
- 38 01.821 N, 89 28.127 W
- 38 01.921 N, 89 28.210 W
- 38 02.033 N, 89 28.462 W
- 38 02.077 N, 89 28.525 W
- 38 02.123 N, 89 28.491 W
- 38 02.199 N, 89 28.482 W
- 38 02.212 N, 89 28.488 W
- 38 02.225 N, 89 28.515 W
- 38° 2.201'N, 89° 28.548'W
- 38° 2.206'N, 89° 28.537'W
- 38° 2.132'N, 89° 28.552'W
- 38° 2.056'N, 89° 28.379'W
- 38° 1.710'N, 89° 28.031'W
- 38° 1.297'N, 89° 27.740'W



Imagery ©2021 Maxar Technologies, USDA Farm Service Agency